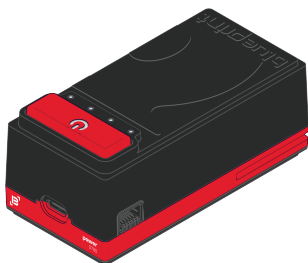




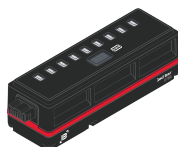
electronics bits



(1) Power Bit



(2) Motor Bit



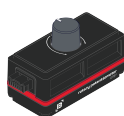
(1) LED Bar Bit



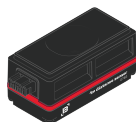
(1) Data Display Bit



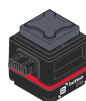
(1) Threshold Bit



(2) Rotary Potentiometer Bit



(1) 1m Distance Sensor Bit



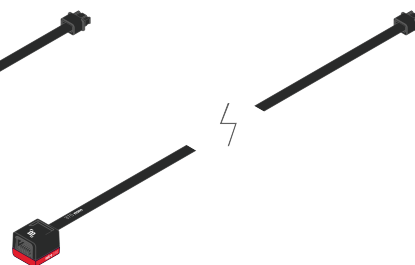
(2) Button Bit



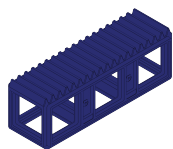
(4) 150mm Wire Bit



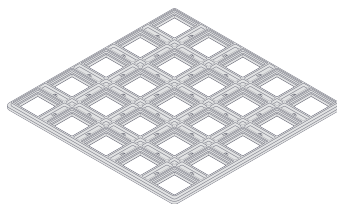
(2) 375mm Wire Bit



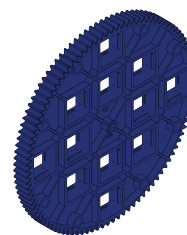
expansion parts



(4) Rack Gear



(2) 5x5 Plate



(2) 100T Gear



(6) High Strength
Shaft Collar



(6) Wire Clamp



(2) Catapult
End Effector